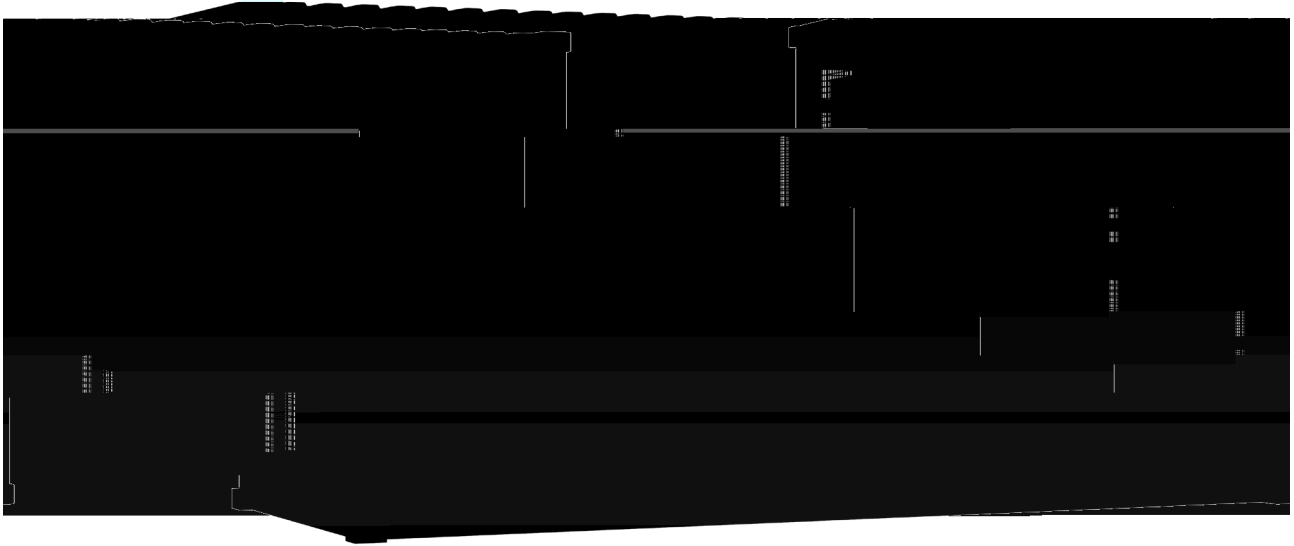


JKE-3440K-2H-LAA



SunTera

280Ah



	(LFP)
	3.2V/280Ah
	0.5P
	1P384S×10
	3.44 MWh
	1228.8V
	1075.2~1382.4V
	-20u 50
	95%RH,
	2000d / <4000d (,)
	80[B(A), @ 1d
IP	IP54
	-20u 45
	C3 (EN ISO 12944) / C4 () / C5()
	+ + + + +
	Ethere\FY\i ()
(L ² W ² H)	6058 ² 2438 ² 2896d d
	35000 kg